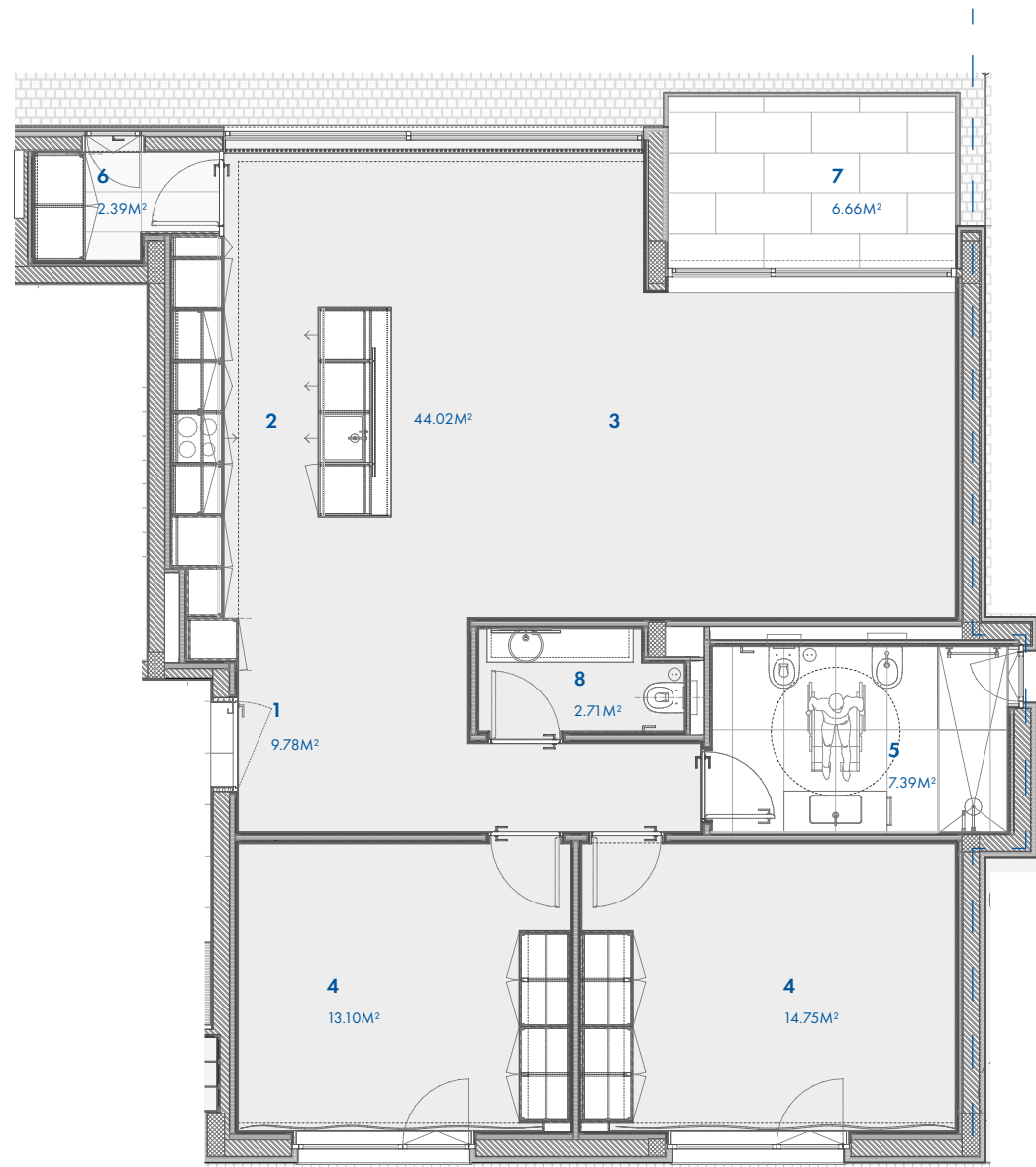


PISO 0 - PARCELA B

T2 - 109.60M<sup>2</sup>

- 1. HALL DE ENTRADA
- 2. COZINHA
- 3. ZONA DE ESTAR
- 4. QUARTO
- 5. I.S.
- 6. LAVANDARIA
- 7. VARANDA
- 8. I.S. SOCIAL



PARCELA B | T2 |