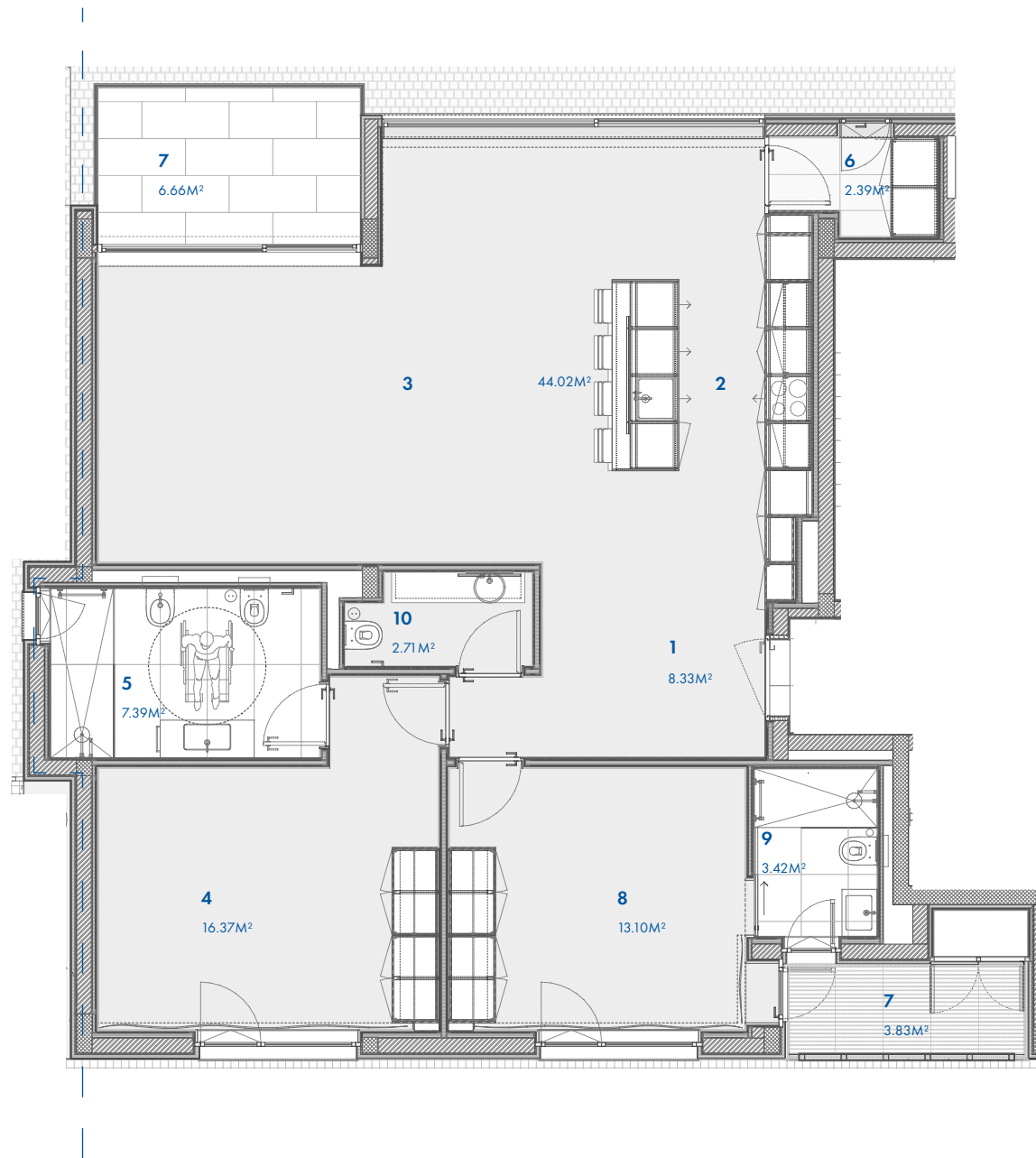


T2 - 116M²

- 1. HALL DE ENTRADA
- 2. COZINHA
- 3. ZONA DE ESTAR
- 4. SUITE MASTER
- 5. I.S. - SUITE MASTER
- 6. LAVANDARIA
- 7. VARANDA
- 8. SUITE JUNIOR
- 9. I.S. - SUITE JUNIOR
- 10. I.S. SOCIAL



PARCELA A | T2